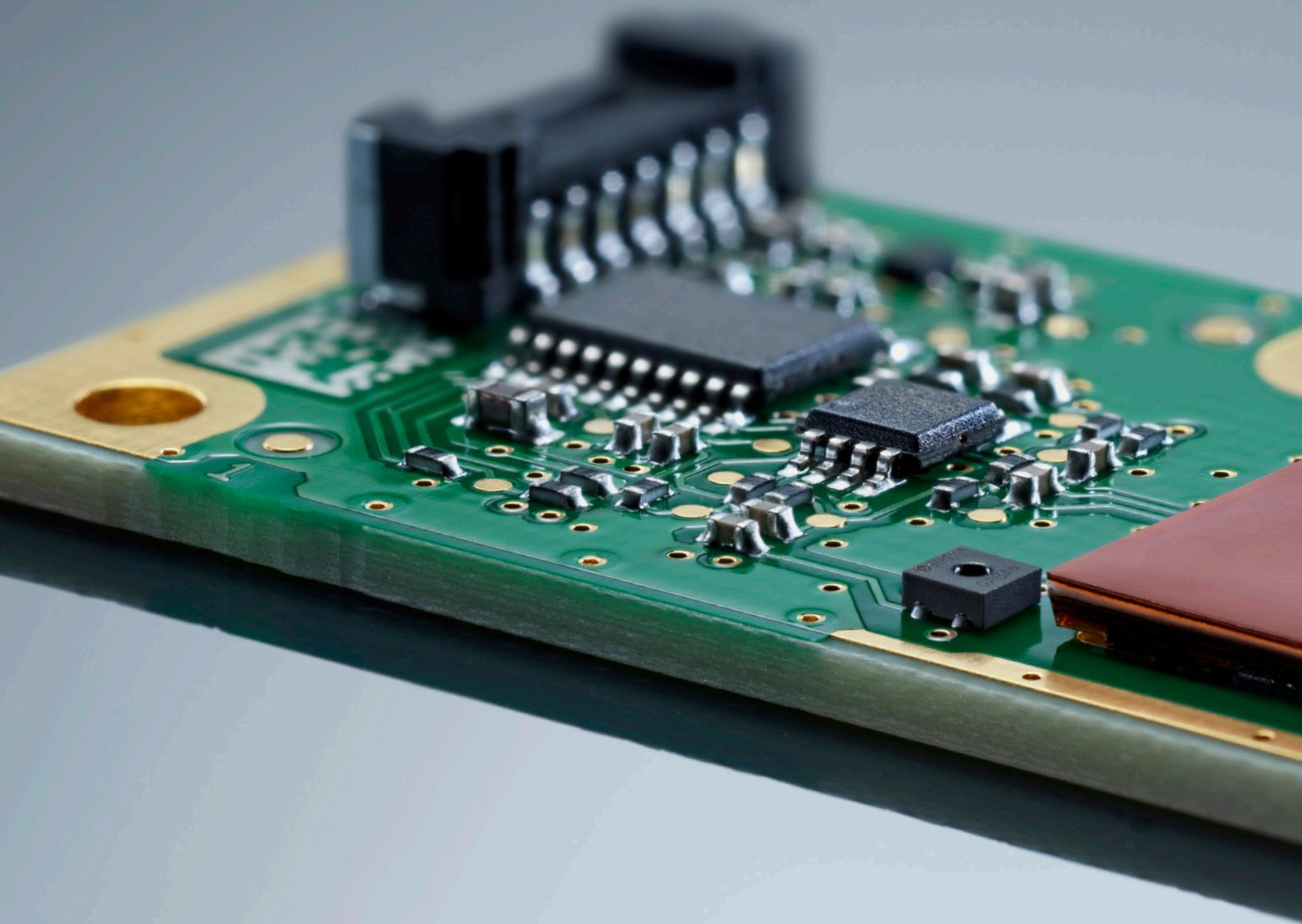


SFA30

Formaldehyde Sensor Module

Formaldehyde sensing made easy



SENSIRION

SFA30

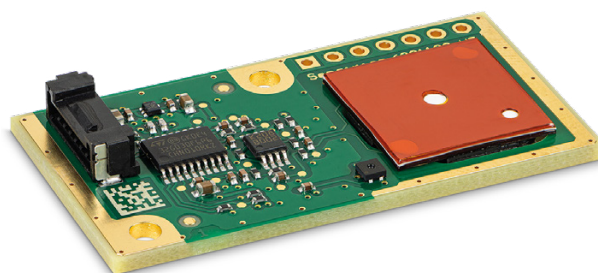
Formaldehyde Sensor Module

The SFA30 is Sensirion's digital formaldehyde sensor designed for easy integration into air purifiers, demand-controlled ventilation systems, or indoor air quality monitors. Based on Sensirion's electrochemical technology, the SFA30 offers excellent formaldehyde sensing performance with a uniquely low cross-sensitivity to other VOCs.

The sensor module's on-board SHT sensor provides accurate humidity and temperature readings and enables a fully temperature/humidity compensated and factory calibrated formaldehyde concentration output in ppb. Relying on Sensirion's experience in environmental sensing and a patented electrochemical cell with anti-dry technology, the SFA30 offers excellent long-term stability and 6 years service lifetime.

Applications

- Air purifiers
- Air conditioners
- Indoor air quality monitors



Sensor specifications

Name	Sensor output	Formaldehyde accuracy	Supply voltage range	Interface	Size (l × w × h) mm
SFA30	Formaldehyde concentration in ppb, relative humidity in %, temperature in °C	± 20 ppb or ± 20% of measured value, whichever is larger	3.3 V or 5.0 V (3.15–5.5 V)	I ² C/UART	46 × 24 × 5.5 mm ³

Technology and benefits

Technology	Benefits
Patented electrochemical cell with anti-dry technology	Excellent long-term stability and 6 years service lifetime
Integrated SHT humidity and temperature sensor	On-board RH and T compensation, additional RH and T output
Uniquely low cross sensitivity to other VOCs	Reliable formaldehyde measurements in real life conditions
Fully factory calibrated module	Easy to use and life-time calibrated

Start evaluating the SFA30 today

The SEK-SFA30 evaluation kit has been designed for easy evaluation of Sensirion's SFA30 formaldehyde sensor. In addition to the SFA30 sensor module, the SEK-SFA30 comes with a UART-USB cable for a plug-and-play connection to a PC and evaluation with Sensirion's easy-to-use SEK-ControlCenter viewer software. For connecting the sensor to prototyping platforms such as Arduino or RaspberryPi, a 7-pin jumper wire cable is provided.

More information can be found at

www.sensirion.com/my-sfa-ek

Compile your own environmental sensing evaluation kit at

www.sensirion.com/sek

www.sensirion.com/sfa30