

# SCC1-USB/RS485 Sensor Cable - Firmware Update

## Application Note for Liquid Flow Sensors

### Summary

This document describes how to update the Firmware on the SCC1-RS485 and the SCC1-USB sensor cables

## 1 Introduction

These firmware update instructions apply to the following products:

- SCC1-RS485 sensor cable with open wire ends, available in two length options: article code 1-100804-01 (length 2m) or 1-101122-01 (length 5m)
- SCC1-USB sensor cable, with integrated USB-to-RS485 converter, article code 1-101007-01

## 2 Hardware Requirements

The firmware update requires a Windows PC and a means for communicating with the cable.

Compatible hardware configurations for use with the SCC1-RS485 Sensor Cable include:

- PC with RS485 PCI board
- PC with USB to RS485 converter
- PC with RS232 to RS485 converter

The SCC1-USB Sensor Cable has an integrated USB-to-RS485 converter and requires a PC with USB slot.

## 3 Downloads

Download and install the SCC1-RS485 Sensor Cable Configurator software from this link:


<https://sensirion.com/resource/software/SCC1-rs485/configurator>

Optionally, download and unpack the latest firmware hex-file from this link:

<https://sensirion.com/resource/software/SCC1-RS485/firmware>

## 4 Firmware update procedure

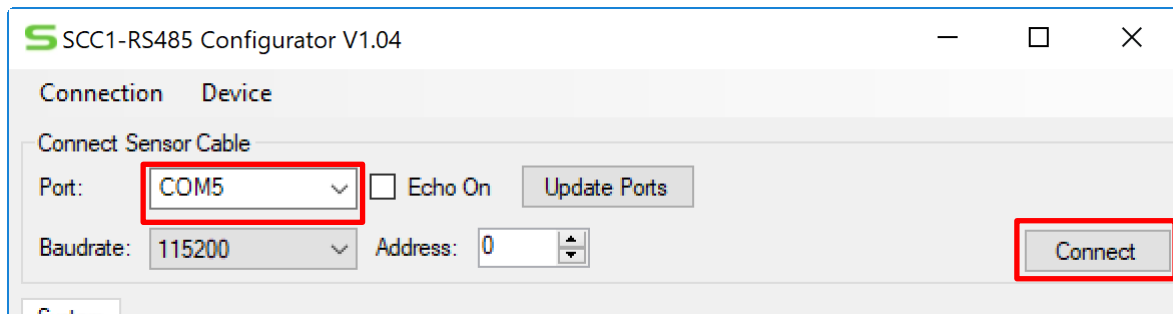
### 4.1 Connect the SCC1-USB or SCC1-RS485 Sensor Cable to your PC



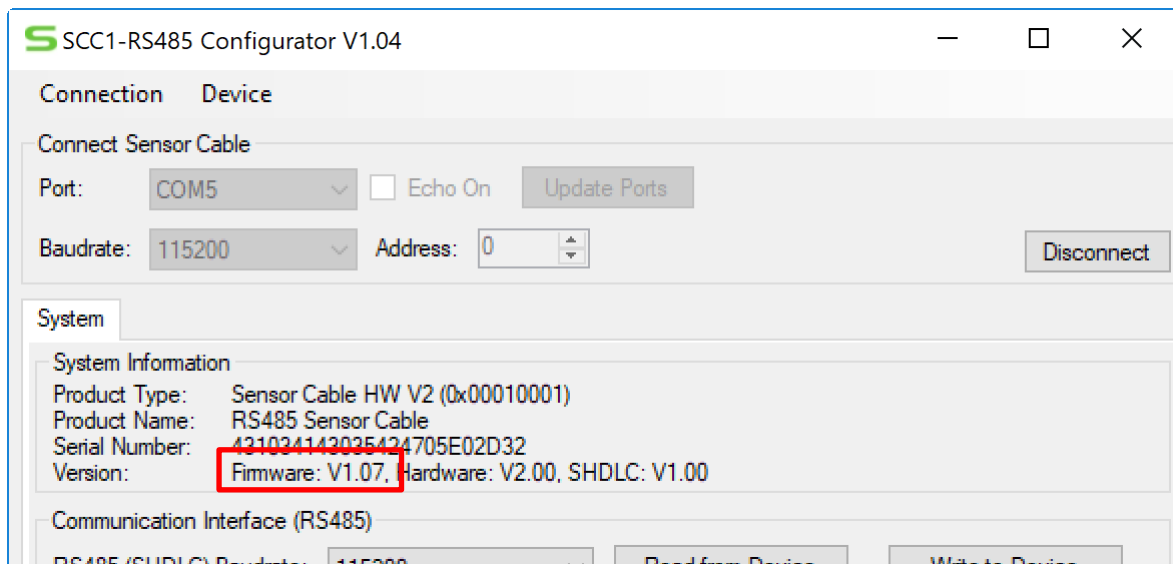
**IMPORTANT!** Make sure to connect only one cable at a time. Firmware update must not be performed with multiple devices on the same RS485 bus.

### 4.2 Launch the SCC1-RS485 Configurator and connect to the SCC1-USB or SCC1-RS485 Sensor Cable

Select the correct COM port and press “Connect”.

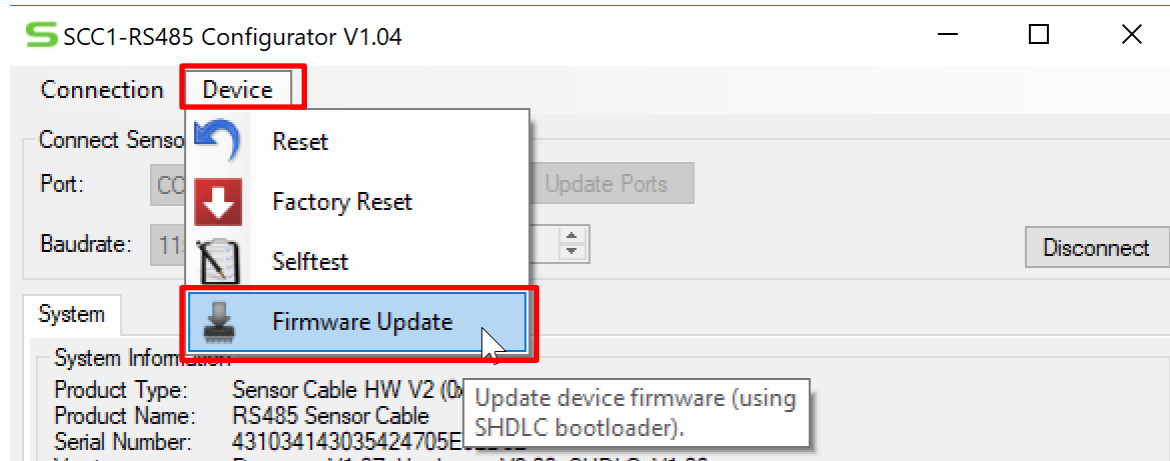


The configurator will show the cable’s current firmware version:

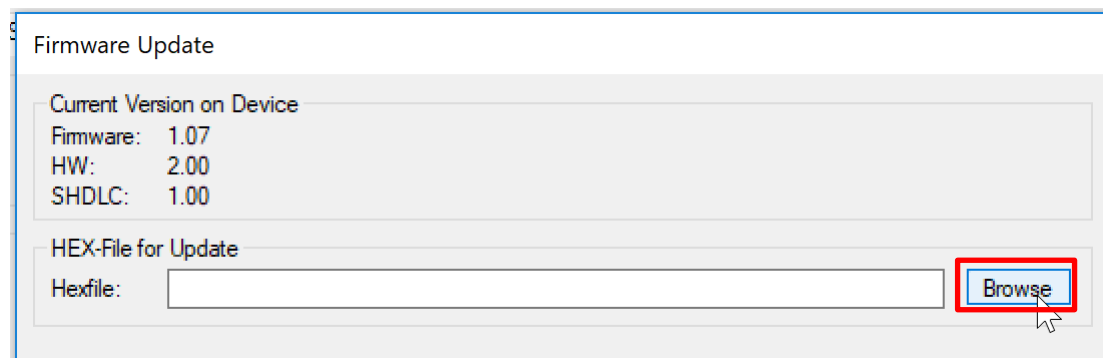


### 4.3 Start the Firmware Update

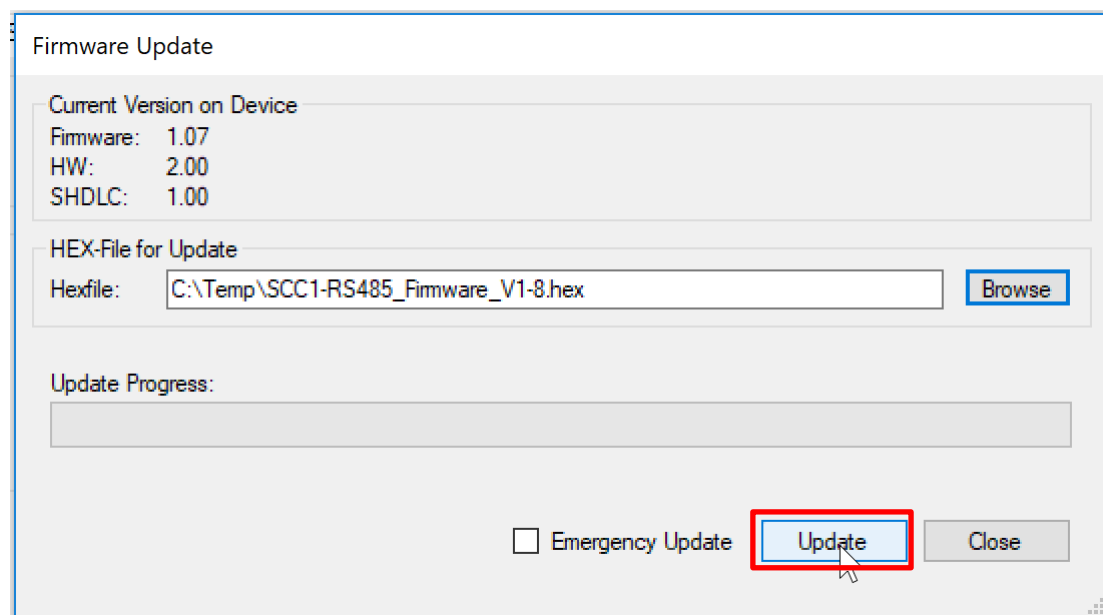
Select Device > Firmware Update:



Select the downloaded hex-file:

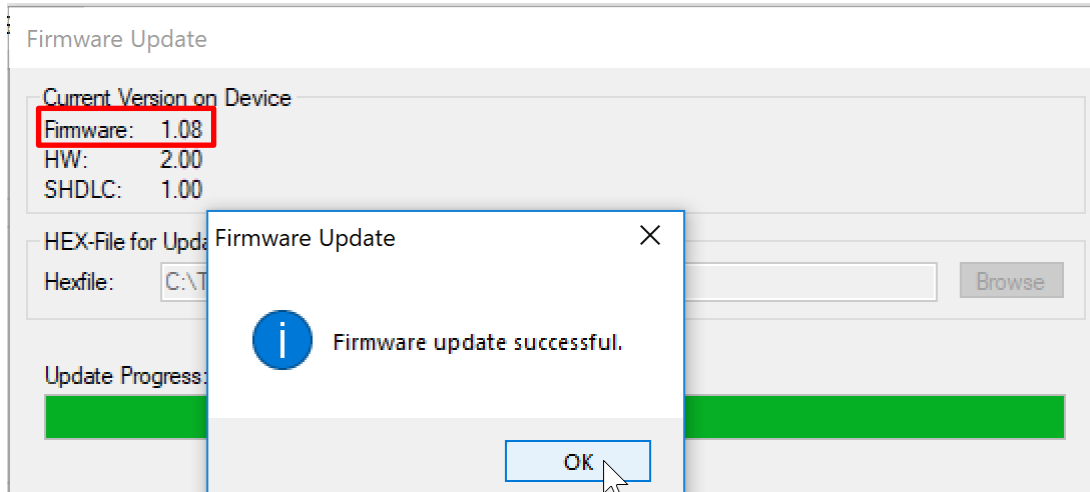


Start the firmware update process:

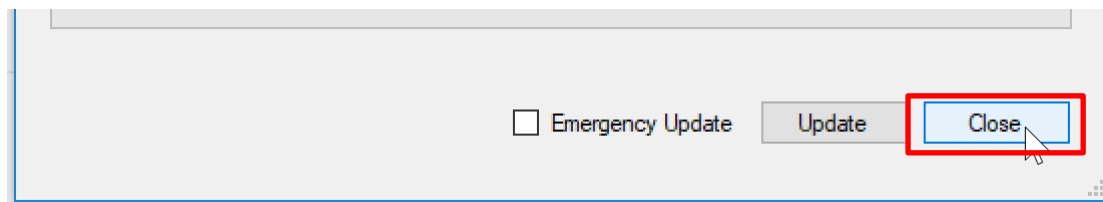


#### 4.4 Finish the Firmware Update

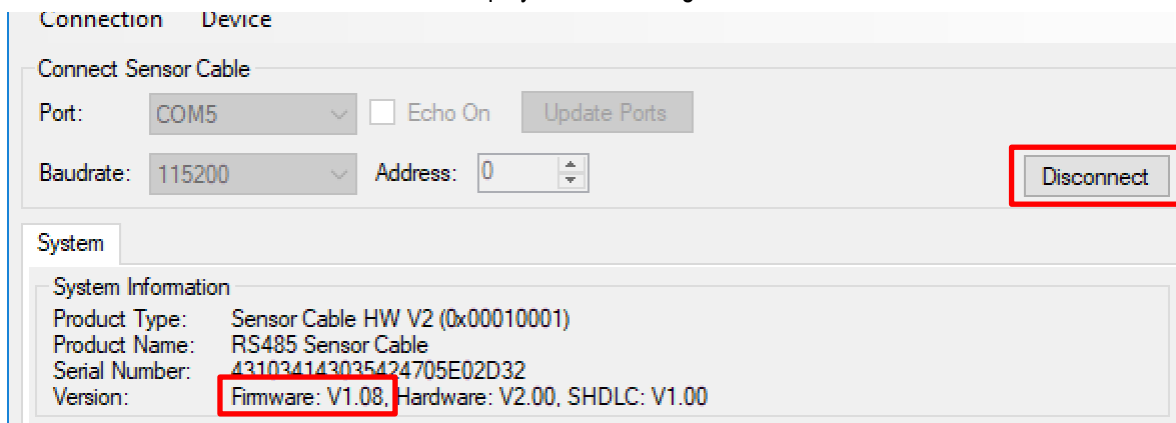
Wait until the firmware update has completed successfully:



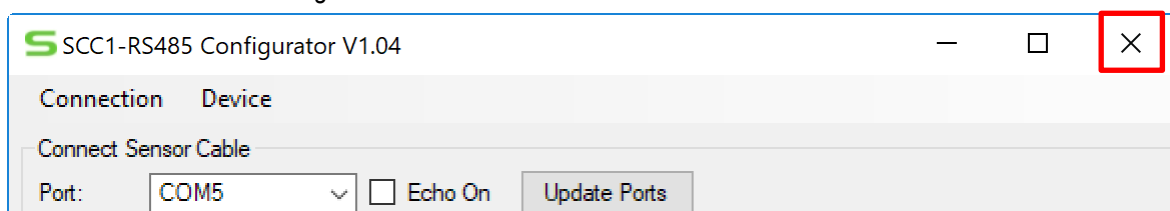
Close the update window:



Check that the correct firmware version is displayed in the configurator and disconnect the Sensor Cable:



Close the Sensor cable configurator:



Copyright© 2020, by SENSIRION.  
CMOSens® is a trademark of Sensirion  
All rights reserved

## 5 Headquarters and Subsidiaries

### **Sensirion AG**

Laubisruetistr. 50  
CH-8712 Staefa ZH  
Switzerland

phone: +41 44 306 40 00  
fax: +41 44 306 40 30  
[info@sensirion.com](mailto:info@sensirion.com)  
[www.sensirion.com](http://www.sensirion.com)

### **Sensirion Taiwan Co. Ltd**

phone: +886 3 5506701  
[info@sensirion.com](mailto:info@sensirion.com)  
[www.sensirion.com](http://www.sensirion.com)

### **Sensirion Inc., USA**

phone: +1 312 690 5858  
[info-us@sensirion.com](mailto:info-us@sensirion.com)  
[www.sensirion.com](http://www.sensirion.com)

### **Sensirion Japan Co. Ltd.**

phone: +81 3 3444 4940  
[info-jp@sensirion.com](mailto:info-jp@sensirion.com)  
[www.sensirion.co.jp](http://www.sensirion.co.jp)

### **Sensirion Korea Co. Ltd.**

phone: +82 31 337 7700~3  
[info-kr@sensirion.com](mailto:info-kr@sensirion.com)  
[www.sensirion.co.kr](http://www.sensirion.co.kr)

### **Sensirion China Co. Ltd.**

phone: +86 755 8252 1501  
[info-cn@sensirion.com](mailto:info-cn@sensirion.com)  
[www.sensirion.com.cn](http://www.sensirion.com.cn)

To find your local representative, please visit [www.sensirion.com/distributors](http://www.sensirion.com/distributors)